



## Event Security

Events Security is the management of public safety at an event. An event can vary from a concert or sports match to a wedding or a party.

Event organisers often use expensive specialist equipment, especially with outdoor events such as a marquee wedding or a park concert and as such security of the property and facilities should be considered in the planning.

An events security team will provide expertise in risk analysis and crowd management with the aim of ensuring that the event passes off with little or no problems.

### Careers

- Steward
- Security Operative
- Event Supervisor
- Surveillance
- Head of Security
- Operations Manager
- Risk Manager
- Head of Product Resourcing
- Crowd Management

### Wage

£9 per hour - £50,000+ p.a.



## Information Security

Information security is the practice of defending information from unauthorized access, use, disclosure, disruption, modification, perusal, inspection, recording or destruction.

Controls include

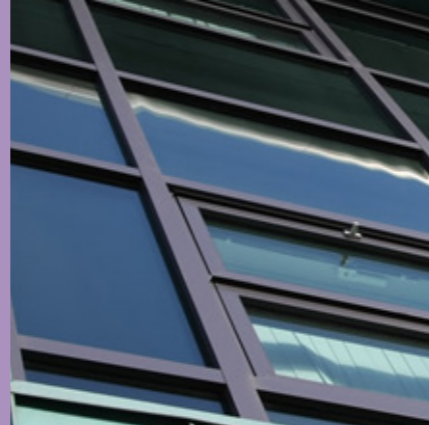
- physical controls - walls, locked doors, guards
- procedural controls - managerial oversight, staff training, defined emergency response processes
- regulatory controls - legislation, policy, rules of conduct
- technical controls - cryptographic software, authorization systems, secure protocols

### Careers

- IT / Cyber Security
- Program Analyst
- Asset Management
- Human Resources
- Access Control
- Communications
- Operation Management
- Business Continuity Management
- Senior Information Risk Owner

### Wage

£16,000 - £80,000+ p.a.



## Physical Security

Physical security refers to the protection of building sites and equipment (and all information and software contained therein) from theft, vandalism, natural disaster, manmade catastrophes, and accidental damage (e.g., from electrical surges, extreme temperatures, and spilled coffee). It requires solid building construction, suitable emergency preparedness, reliable power supplies, adequate climate control, and appropriate protection from intruders.

Controls to protect facilities range from signs and CCTV to the design of equipment and buildings such as bomb proof windows.

### Careers

- IT
- Office Management
- Security Operative
- CCTV controller
- Glazing specialist
- Building or barrier designer
- Entry system designer
- Loss prevention Manager
- Operations Manager

### Wage

£16,000 - £50,000+ p.a.



## Cash & Valuables

Cash-in-transit (CIT) or Cash/valuables-in-transit (CVIT) is the physical transfer of banknotes, coins and items of value from one location to another.

The industry invests a huge amount in security measures and route planning to combat robbery and new technologies are constantly being explored.

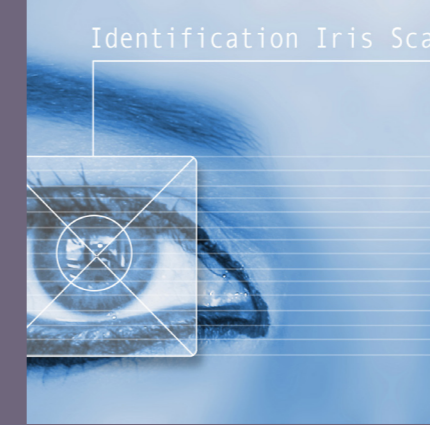
These include protective equipment, enhanced training, CCTV, body cameras, DNA dye and glue to protect cash rendering much of the money stolen unusable where attacks do occur.

### Careers

- Driver
- Training officer
- Chemical engineer
- Branch / Site Manager
- Operations
- Marketing & Sales Officer
- Supply Chain Management
- Technical Director
- Human Resources

### Wage

£12,000 - £80,000+ p.a.



## Biometrics & Access Control

Access control enables you to control who has access to your building.

Keys and locks are one method to secure a building or electronic access can be via a card, token or pin number which can easily be changed.

A biometric security system measures and analyses human body characteristics, such as DNA, fingerprints, eye retinas and irises, voice patterns, facial patterns and hand measurements, for authentication.

Unlike keys, cards or numbers, biometric security readers provide access that cannot be transferred.

### Careers

- Locksmith
- Design locksmith
- Research & Development
- QA Director
- Business Development Manager
- Statistical Programmer
- Biostatistician
- Technician
- Sales

### Wage

£12,000 - £80,000+ p.a.



## Close Protection

A close protection officer is an agent who protects a person or persons from danger such as theft, assault, kidnapping, assassination, harassment, loss of confidential information, threats, or other criminal offences.

The role consists mainly of planning routes, pre-searching rooms and buildings where the client will be visiting, researching the background of people that will have contact with the client, searching vehicles, and attentively escorting the client on their day-to-day activities.

Nanny / Manny Guards are trained to protect the children in their charge.

### Careers

- Nanny/Manny Guard
- Security Officer
- Close Protection Officer
- Security Trainer
- Investigator
- Operations Manager
- Conflict Management Trainer
- Business Owner
- Consultant

### Wage

£12,000 - £100,000+ p.a.